

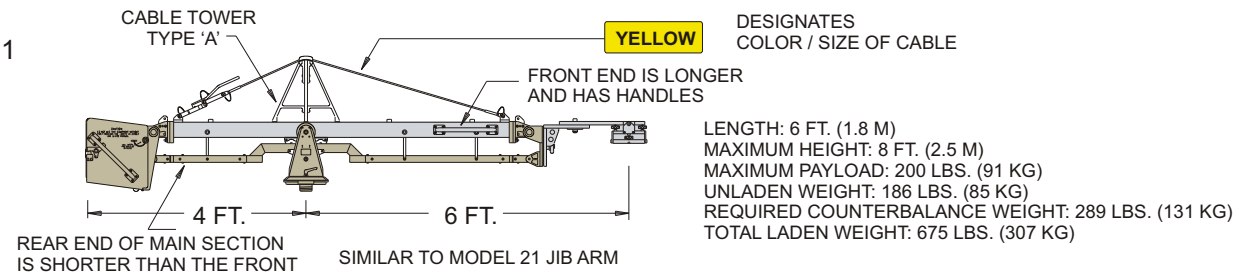
MODEL 23 JIB TECHNICAL DATA

PLEASE REFER TO THE USER MANUAL FOR ASSEMBLY INSTRUCTION.

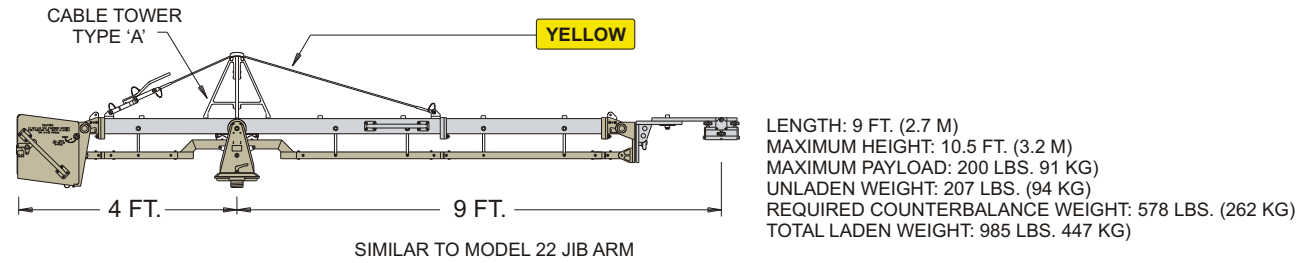
THE MODEL 23 JIB IS RECOMMENDED FOR USE WITH J.L. Fisher MODEL NINE OR TEN CAMERA DOLLIES WITH A CENTER MOUNT AND THE HEAVY-DUTY 12 IN. RISER SUPPLIED. *

* NOT FOR USE ON THE J.L. Fisher MODEL ELEVEN CAMERA DOLLY.

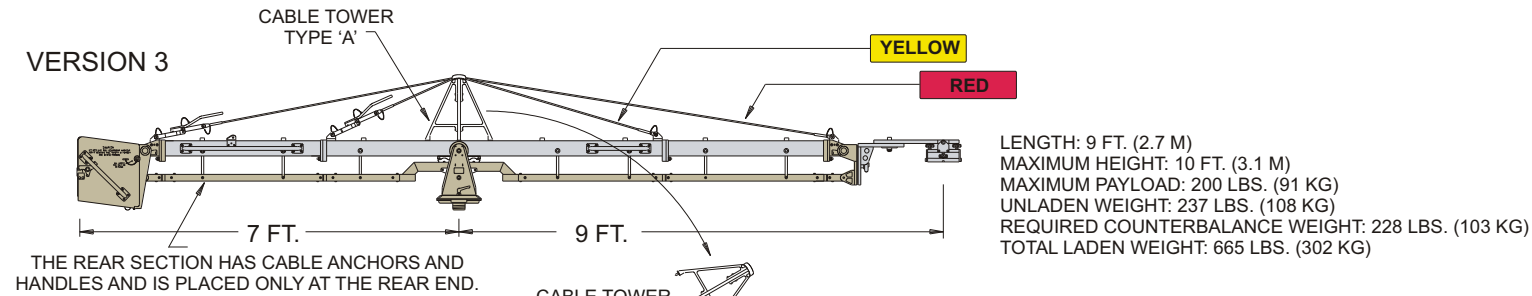
VERSION 1



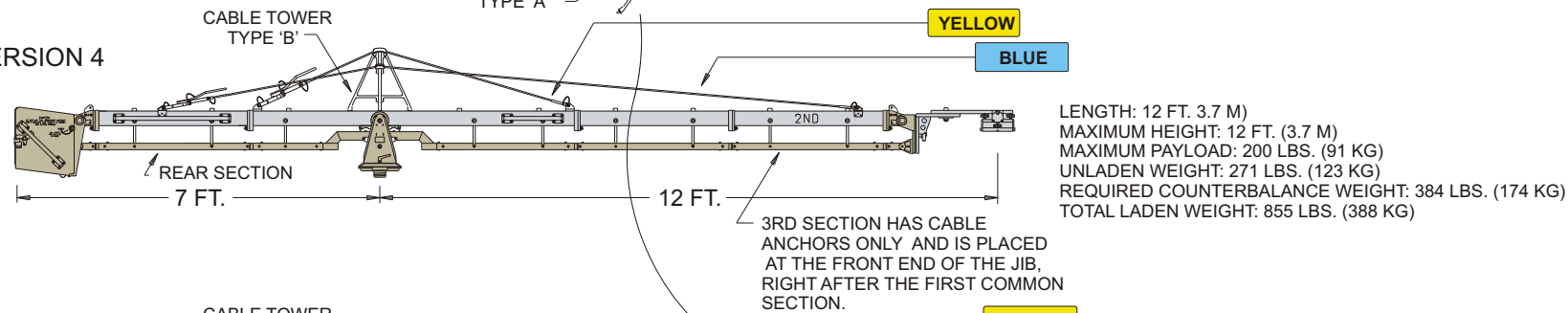
VERSION 2



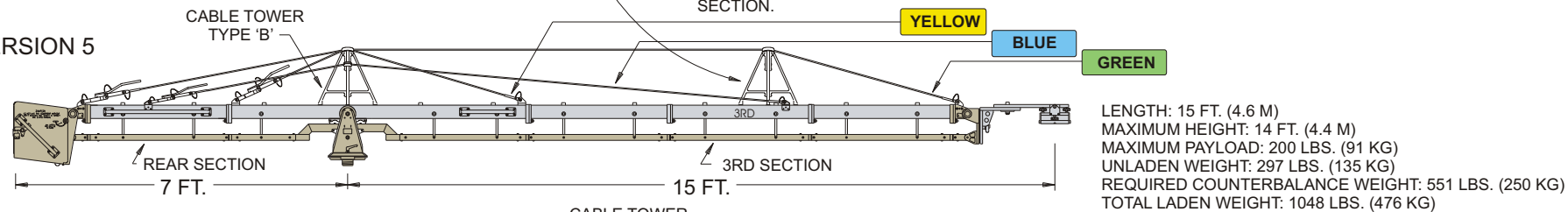
VERSION 3



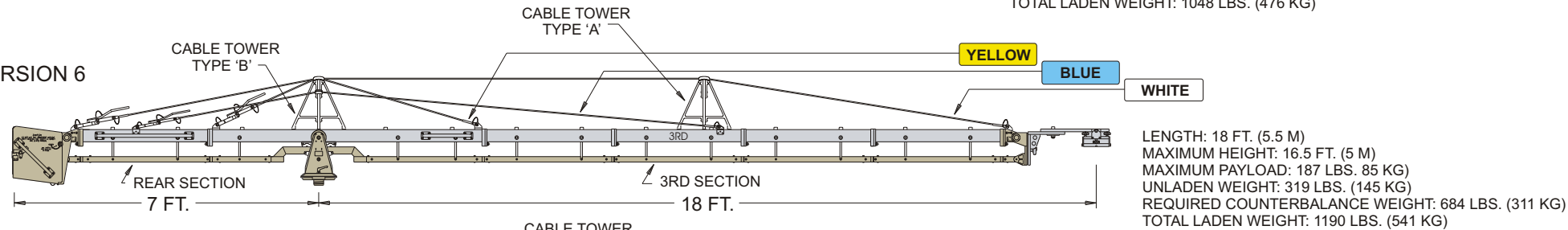
VERSION 4



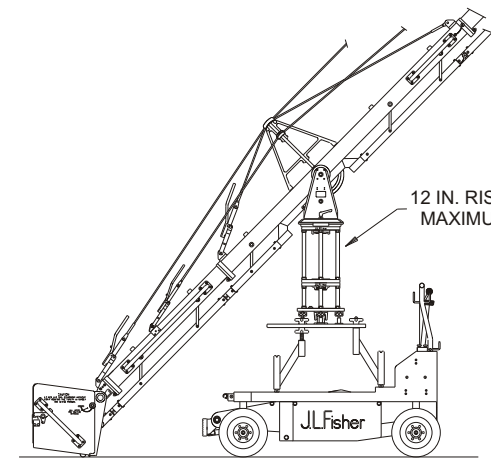
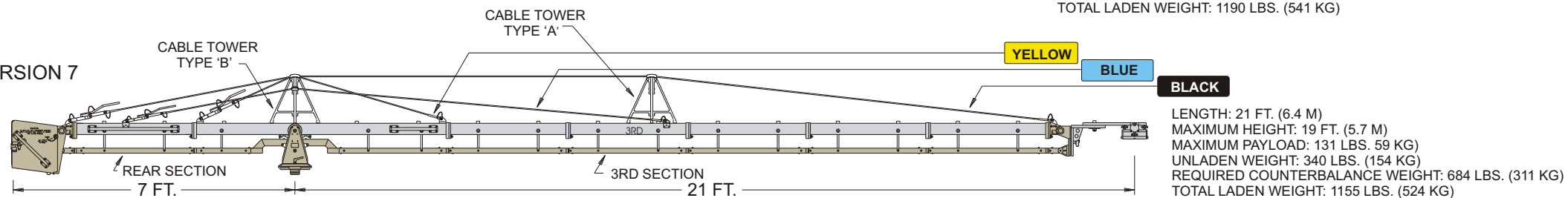
VERSION 5



VERSION 6



VERSION 7



CAUTION

WITH THE MODEL NINE OR TEN CAMERA DOLLIES AND CENTER MOUNT OR ANY OTHER SUITABLE BASE THE WEIGHT BUCKET MUST COME INTO CONTACT WITH THE GROUND.

KNOW THE DIFFERENCE

"COMMON SECTION" IS USED AT FOUR DIFFERENT PLACES ALONG THE FRONT END OF THE JIB.

"REAR SECTION" HAS CABLE ANCHORS AND HANDLES AND IS PLACED ONLY AT THE REAR OR WEIGHT BUCKET END.

"3RD SECTION" HAS CABLE ANCHORS AND IS PLACED AT THE FRONT END OF THE JIB, RIGHT AFTER THE FIRST COMMON SECTION.

TYPE "A" CABLE TOWER IS USED ON THE MAIN SECTION FOR THE 6 AND 9 FT. LENGTHS, IT IS MOVED FORWARD FOR THE 15, 18, 21 FT. LENGTHS.

TYPE "B" CABLE TOWER MUST BE USED ON THE MAIN SECTION WHEN ASSEMBLING A MODEL 23 JIB 12 FT. OR LONGER.