



Motion Picture & Television Equipment

# Dolly Track

## Straight & Curved Options

The best way to get a smooth camera dolly shot is to use your dolly on our professional Dolly Track.

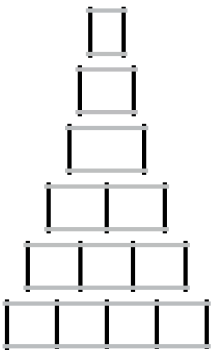


Straight Track sections fold from 24.5" wide to 5" wide for easy transport and storage



### Track & Track Accessories

#### Straight Track



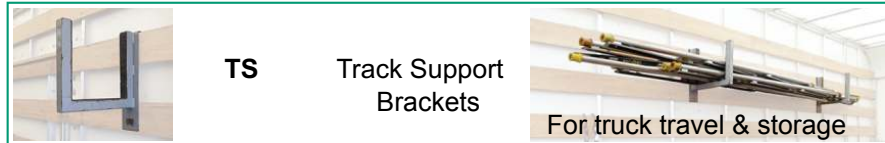
	Length	Length (folded)	Weight
TR2	2' (.61m)	4.1' (1.3m)	11.8 lbs (5.4kg)
TR3	3' (.91m)	5.1' (1.6m)	15.0 lbs (6.8kg)
TR4	4' (1.2m)	6.1' (1.9m)	16.2 lbs (7.3kg)
TR6	6' (1.8m)	8.1' (2.5m)	23.8 lbs (10.8kg)
TR	8' (2.4m)	10.1' (3.0m)	30.2 lbs (13.7kg)
TR10	10' (3m)	12.1' (3.7m)	38.0 lbs (17.2kg)

Round Tube Track 1.5" (3.8cm) Diameter

All J.L. Fisher track is on 24.5" (62.23cm) center line between rails.

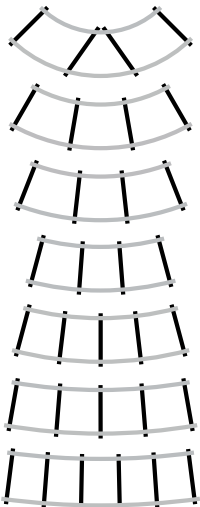


Curved Track Diameters are Measured from Centerline Between Rails



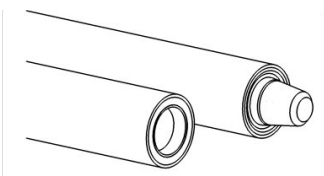
TS Track Support Brackets  
For truck travel & storage

#### Curved Track

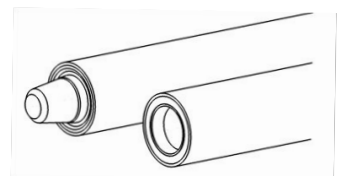


	Diameter Full Circle	Angle Section	Sections For Full Circle	Length* Section	Width* Section	Weight Section
CR10	10' (3m)	90°	4	8.7 ft (2.7m)	3.2 ft (.96m)	31.2 lbs (14.2kg)
CR15	15' (4.6m)	60°	6	8.5 ft (2.6m)	3.1 ft (.94m)	30.5 lbs (13.8kg)
CR	20' (6.1m)	45°	8	7.8 ft (2.4m)	3.0 ft (.91m)	29.0 lbs (13.2kg)
CR25	25' (7.6m)	30°	12	7.1 ft (2.2m)	2.8 ft (.85m)	27.8 lbs (12.6kg)
CR30	30' (9.1m)	30°	12	8.4 ft (2.6m)	2.9 ft (.88m)	33.8 lbs (15.3kg)
CR50	50' (15.2m)	20°	18	9.2 ft (2.8m)	2.8 ft (.85m)	34.5 lbs (15.6kg)
CR70	70' (21.3m)	15°	24	9.5 ft (2.9m)	2.8 ft (.85m)	38.8 lbs (17.6kg)

J.L. FISHER INC. PRODUCTS ARE PROUDLY MADE IN BURBANK, CALIFORNIA U.S.A.

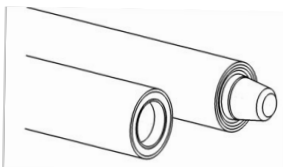


**J.L. Fisher Inc. Motion Picture & Television Equipment**  
**1000 W. Isabel Street Burbank, CA 91506 USA**  
**Tel: (818) 846-8366 Fax: (818) 846-8699**  
**Website: www.jlfisher.com email: info@jlfisher.com**

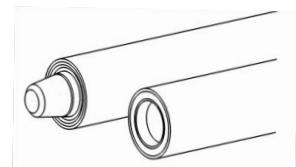


# Curved Dolly Track

Product Type	Description	Pricing	Replacement Value
<b>CR10</b> 90° angle	Full Circle = 4pcs 10' Diameter / 5' Radius	8.7/section	
	10' D Middle of track to Middle of track	\$15.40/day	\$2,200.00
	12' D Outside rail to Outside rail	\$46.20/wk	
	8' D Inside rail to Inside rail		
	5' R Middle of track to Center of circle		
	6' R Outside rail to Center of circle		
	4' R Inside rail to Center of circle		
<b>CR15</b> 60° angle	Full Circle = 6pcs 15' Diameter / 7.5' Radius	8.5/section	
	15' D Middle of track to Middle of track	\$15.40/day	\$2,200.00
	17' D Outside rail to Outside rail	\$46.20/wk	
	13' D Inside rail to Inside rail		
	7.5' R Middle of track to Center of circle		
	8.5' R Outside rail to Center of circle		
	6.5' R Inside rail to Center of circle		
<b>CR</b> 45° angle	Full Circle = 8pcs 20' Diameter / 10' Radius	7.8/section	
	18' D Middle of track to Middle of track	\$15.40/day	\$2,200.00
	20' D Outside rail to Outside rail	\$46.20/wk	
	16' D Inside rail to Inside rail		
	9' R Middle of track to Center of circle		
	10' R Outside rail to Center of circle		
	8' R Inside rail to Center of circle		
<b>CR25</b> 30° angle	Full Circle = 12pcs 25' Diameter / 12.5' Radius	7.1/section	
	25' D Middle of track to Middle of track	\$15.40/day	\$2,200.00
	27' D Outside rail to Outside rail	\$46.20/wk	
	23' D Inside rail to Inside rail		
	12.5' R Middle of track to Center of circle		
	13.5' R Outside rail to Center of circle		
	11.5' R Inside rail to Center of circle		
<b>CR30</b> 30° angle	Full Circle = 12pcs 30' Diameter / 15' Radius	8.4/section	
	30' D Middle of track to Middle of track	\$15.40/day	\$2,200.00
	32' D Outside rail to Outside rail	\$46.20/wk	
	28' D Inside rail to Inside rail		
	15' R Middle of track to Center of circle		
	16' R Outside rail to Center of circle		
	14' R Inside rail to Center of circle		
<b>CR50</b> 20° angle	Full Circle = 18pcs 50' Diameter / 25' Radius	9.2/section	
	50' D Middle of track to Middle of track	\$17.60/day	\$2,200.00
	52' D Outside rail to Outside rail	\$52.80/wk	
	48' D Inside rail to Inside rail		
	25' R Middle of track to Center of circle		
	26' R Outside rail to Center of circle		
	24' R Inside rail to Center of circle		
<b>CR70</b> 15° angle	Full Circle = 24pcs 70' Diameter / 35' Radius	9.5/section	
	70' D Middle of track to Middle of track	19.80/day	\$2,200.00
	72' D Outside rail to Outside rail	\$59.40/wk	
	68' D Inside rail to Inside rail		
	35' R Middle of track to Center of circle		
	36' R Outside rail to Center of circle		
	34' R Inside rail to Center of circle		

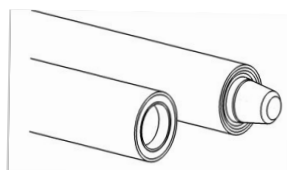
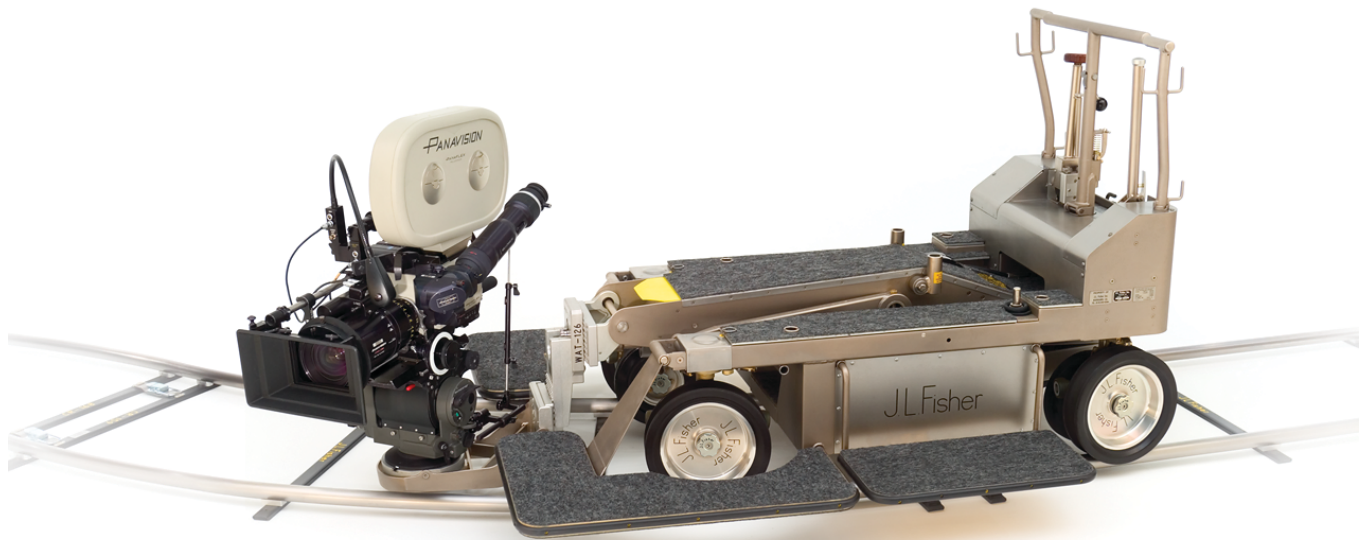


**J.L. Fisher Inc. Motion Picture & Television Equipment**  
**1000 W. Isabel Street Burbank, CA 91506 USA**  
**Tel: (818) 846-8366 Fax: (818) 846-8699**  
**Website: www.jlfisher.com email: info@jlfisher.com**



# Straight Dolly Track

Product Type	Length	Length Folded	Weight	Pricing	Replacement Value
<b>TR2</b>	2' (.61m)	4.1' (1.3m)	11.8 lbs (5.4kg)		
				\$5.75/day	\$800.00
				\$17.25/wk	
<b>TR3</b>	3' (.91m)	5.1' (1.6m)	15.0 lbs (6.8kg)		
				\$5.75/day	\$825.00
				\$17.25/wk	
<b>TR4</b>	4' (1.2m)	6.1' (1.9m)	16.2 lbs (7.3kg)		
				\$8.25/day	\$850.00
				\$24.75/wk	
<b>TR6</b>	6' (1.8m)	8.1' (2.5m)	23.8 lbs (10.8kg)		
				\$10.00/day	\$975.00
				\$30.00/wk	
<b>TR</b>	8' (2.4m)	10.1' (3.0m)	30.2 lbs (13.7kg)		
				\$11.00/day	\$1,100.00
				\$33.00/wk	
<b>TR10</b>	10' (3m)	12.1' (3.7m)	38.0 lbs (17.2kg)		
				\$13.00/day	\$1,250.00
				\$39.00/wk	



**J.L. Fisher Inc. Motion Picture & Television Equipment**  
**1000 W. Isabel Street Burbank, CA 91506 USA**  
**Tel: (818) 846-8366 Fax: (818) 846-8699**  
**Website: www.jlfisher.com email: info@jlfisher.com**

