



J.L. Fisher, Inc.
Motion Picture & Television Equipment

Cold Weather Oil Change: (Model 10 or 11)

In order to obtain better booming performance at low temperatures below 0°F (-18°C), customers occasionally drain our hydraulic oil and replace it with an Automatic Transmission Fluid (see list of suitable ATF below).

Pennzoil Dex/Merc ATF

Fuchs Titan ATF 3353

Valvoline Dex/Merc ATF

Triax Multipurpose ATF

Amalie DXIII-H/M ATF

Kendall Classic ATF

Mobil ATF Dexron III

Gazpromneft ATF DX III

Motorex Synthetic ATF3

Castrol Transmax Dex/Merc

Valvoline MaxLife Full Synthetic ATF

CAM2 Multi-vehicle Synthetic Blend ATF

Motul Dexron III Technosynthese

FANFRO ATF III

Europe Shell ATF III

Liqui Moly ATF III

Coastal Dex/Merc

ACDelco ATF Type III

ELF ELFMATIC MV

Miles ATF Dexron III

MANNOL Dexron III

Mobil 1t ATF Synthetic

This is best done at the rental company by a J.L. Fisher trained mechanic. However, if it is necessary to change oil on location, follow this procedure.

TOOLS required:

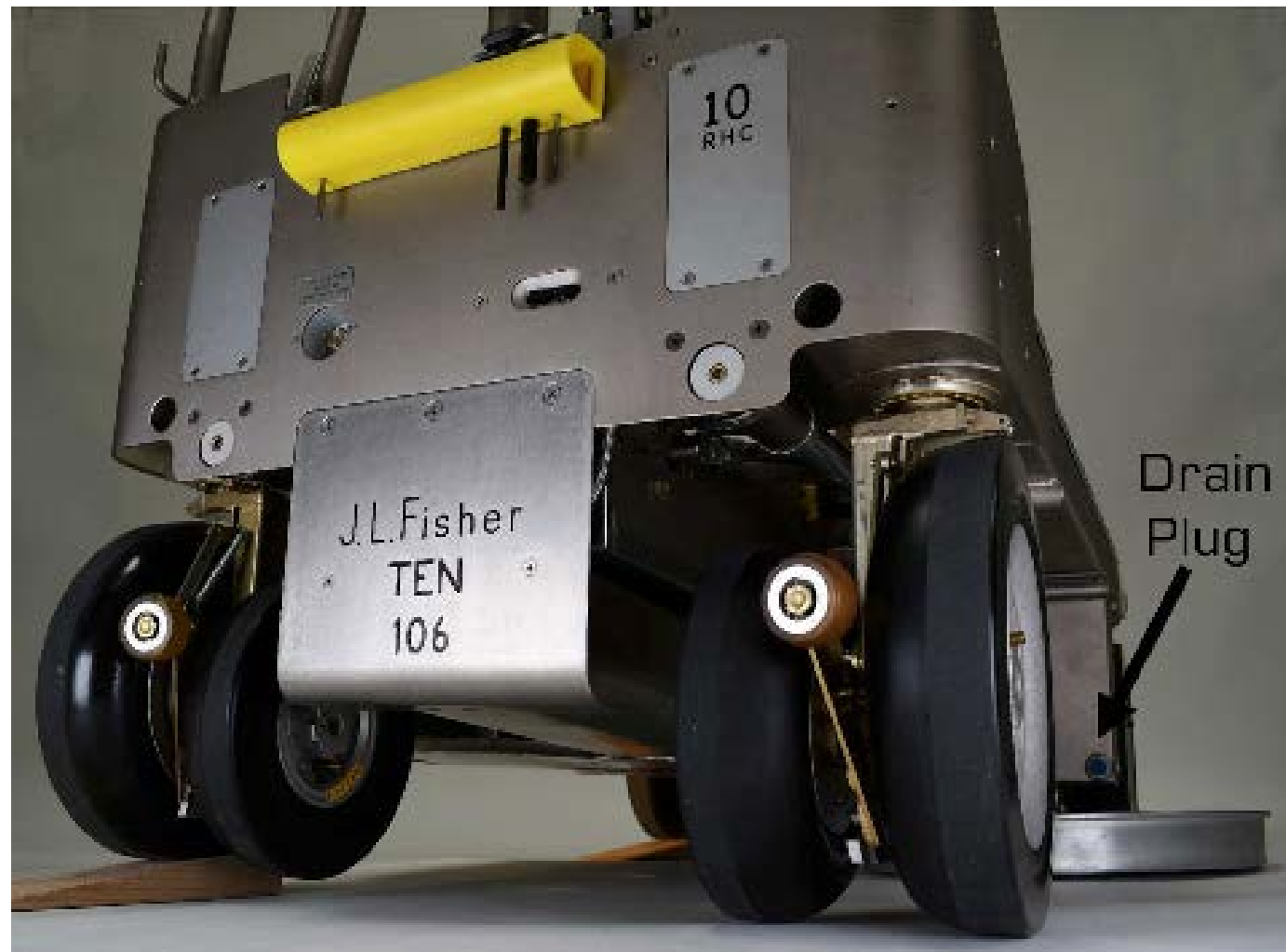
- 3 qt/l ATF from list (or equivalent) for 11 Dolly Actual amount approximate-use dipstick-see pg. 5
- 5 qt/l ATF from list (or equivalent) for 10 Dolly Actual amount approximate-use dipstick-see pg. 5
- 3/4" Box/Open End Wrench (oil caps)
- 11/16" Box/Open End Wrench (10 dolly drain plug)
- 1/4" Hex Key (11 dolly drain plug)
- 6 qt/l Drain Pan
- Funnel (Must Fit 9/16" / 14mm hole)
- Pencil
- Towels/Rags
- Tape
- Tape Measure/Ruler
- Track Wedges (2ea)

To CHANGE dolly oil to ATF :

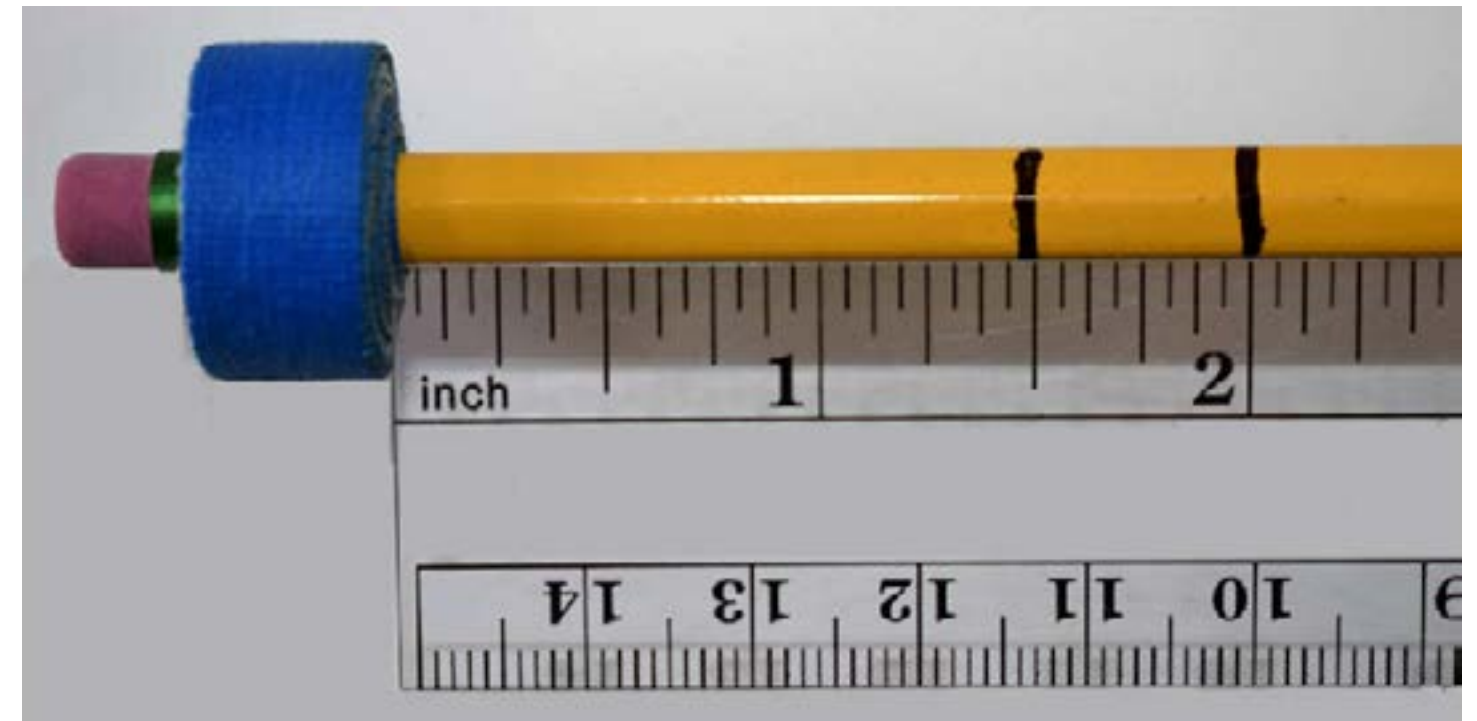
- Place dolly on a clean and dry level surface.
- To ZERO OUT THE GAUGE, run the beam up and down until the beam will not go up anymore.
- Return beam down, resting on oil tank.
- Remove both oil caps from the tank on the dolly. Place these in a clean safe area.



- Place track wedges under the left forward and rear wheels-pushing the dolly up onto them and applying the brake.



- Place a drain pan (minimum 6qt/l) under the right side and remove the drain plug.
- When drained, reinstall drain plug and remove dolly from wedges.
- Save fluid for future use or dispose of responsibly.



- Using a pencil as a measuring stick, on one end wrap a ball of tape large enough not to fall through tank opening. Measure and mark pencil from tape at a length of:

1 1/2"-2" (4-5cm) For 10 Dolly
2"-2 1/2" (5-6cm) For 11 Dolly

- Lower the pencil into one tank cap hole and a funnel into the other.
- Slowly begin to pour ATF into the funnel, stopping incrementally to observe tank level on dipstick. Volume of oil needed may be less than volume stated under tools list.

- When the oil reaches between the two marks (minimum and maximum) on the pencil, remove the funnel and pencil- reinstalling both oil caps finger tight.
- Dolly is ready for use.